



Education &
Communities

Public Schools NSW

4075



Kirrawee Public School Annual School Report



2023



School context

Kirrawee Public School caters for a wide range of students most of whom live within two to three kilometres of the school. The school and community strongly support the school values of Respect, Responsibility, Fair Go, Cooperation and Excellence. Differentiated learning programs cater for students with learning difficulties and gifted skills. The school is strongly supported by active and engaged parent groups. Our enrolment during 2013 reached 235 students. In 2013 we operated with 8 mainstream and 3 support classes.

Staff

Kirrawee's staffing allocation as per the department's guidelines (based on school enrolments) had 15.03 teaching staff members in 2013. This included the Principal and 3 teaching executive staff, 1 specialist executive, 5 classroom teachers and 2 special education teachers. In addition the school was serviced by an ESL teacher and a specialist learning support teacher.

Significant programs and initiatives

The school has continued to provide outstanding programs and initiatives to cater for student learning and educational needs.

Principal's message

In publishing this report to the school and the wider community, I acknowledge the Gweagle people on whose land the school was built. Kirrawee Public School values the productive and purposeful relationships that have developed with our families and the community. The support of our parents as individuals and through the P & C has significantly added to the quality of the learning experience that our students enjoy. The provision of a teacher four days per week to support students who may be experiencing difficulties in reading and or mathematics have been most beneficial. Additionally our parent groups coordinate the uniform shop, arrange discos, support reading programs and coordinate events and routinely help out in classrooms.

A significant program for the staff has been professional development. Our school has had a strong role in developing units of work to support the implementation of the new English curriculum in NSW. The teachers engaged in Saturday work at school to ensure the maximum opportunity is given to this important reform. Our push for the performing arts has continued. In 2013, the school band has increased in numbers and we have been absolutely amazed at how quickly the band standard improved. Congratulations to the band tutors and students. We also have had additional choirs, dance groups, both a junior and senior group. Our students performed not only for the Kirrawee Community, but at the Sutherland Entertainment Centre. Our students performed very well in sporting and other competitions with a number of teams making finals and some winning the grand final. A special mention needs to be made of Jai Elliott who not only excelled in eight elite sporting programs, but was selected to the state team in softball. Shelby Charles received an award of excellence for her work on Koori Art expression.

Thanks and congratulations to the staff for their outstanding commitment to supporting our students. The quality of teaching and learning programs for our students is second to none. My congratulations also to the students who consistently display the school core values of Respect, Responsibility, Cooperation, Fair Go and Excellence.

I certify that the information in this report is the result of a rigorous school self-evaluation process and is balanced and genuine account of the school's achievements and areas for development.

Selwyn Williams



P & C President's message

I would like to take this opportunity to thank the committee of 2013 for their continued support both to myself and to Kirrawee Public School. Thank you to Mr Williams and to the staff for your support and continued communication with the P&C.

It has been a very busy year as far as fundraising for the school, Election Day, Bunnings BBQ, Bingo night, disco and movie nights, Gynea Fair and Christmas Carols. We set ourselves, as a P&C, a target early in the year and this was reached with the help of the community and the kids are now enjoying the pleasures of having electronic whiteboards in all classrooms. I was given a tour by Ms Kirkis and they are a fantastic educational tool for our kids.

The P&C's objectives are to:

- Promote the interests of the school by bringing parents, citizens, pupils and teaching staff into close co-operation.
- Assist in providing equipment for the school.
- Assist the teaching staff in establishment of school policy and management in all facets of school activity.

Without the P&C committee and its community our targets would not be obtainable and I thank everybody for the support that has been offered to the school.

Thank you to Margo, as Secretary of the P&C she has done a tremendous job keeping the email database up to date and completing all the necessary paperwork and ensuring our school community is kept up to date with everything that is happening in our school.

Thank you to Skye Keers for her tremendous effort she does running the school canteen. She goes above and beyond to ensure all the kids are offered an assortment of healthy options. Your efforts are greatly appreciated by the P&C and the school.

Thank you to the amazing volunteers that help out in the Uniform Shop and the fantastic service that is offered to the school community.

I have enjoyed my past few years volunteering my time on the P&C committee and helping the school where I can and would like to wish the incoming committee for 2014 all the best for the year ahead and may the continued efforts from everybody follow on in the years ahead.

Sharyn Field

Student representative's message

The time has come to move on and go to high school. Even though this year has gone so fast, we have enjoyed every minute of it ! We will miss all of our wonderful teachers, principal and the staff in the office. Over the many years that we have been here at Kirrawee Public School we have been on a wonderful journey of education and life experiences. We have been on camps, excursions and leadership conferences. Throughout the years at Kirrawee all of us have achieved many great awards. WE have also made great memories such as, gymnastics, futsal, the T-ball/softball program and performing arts events.

The opportunity of being a leader in a great school with high caring values was a great privilege for us.

We hope our kindergarten buddies will enjoy their journey at Kirrawee and we wish them well as they are in a safe and wonderful school. We say good luck to our fellow friends who we leave behind-“ education is the future”

We will definitely miss Kirrawee and hope that high school will be as much fun as primary School. Good bye and good luck fromm the 2013 school captains !

Nicola Johnson and Oliver Hawksworth



School context

Student information

Kirrawee Primary School fosters a strong learning environment that promotes and supports the learning of all student. It is a requirement that the reporting of information for all students be consistent with privacy and personal information policies.

Student enrolment profile

	2008	2009	2010	2011	2012	2013
Male	145	152	143	125	128	126
Female	115	113	113	117	106	89

Student enrolments showed minimum growth in 2013, however, the expressions of interests for new enrolments for 2014 is very promising. It is estimated that 2014 will reflect on average a small increase in student numbers.

Student attendance

	Year	2008	2009	2010	2011	2012	2013
School	K		95.6	96.0	96.4	95.5	90.3
	1		93.1	95.4	94.9	92.9	95.8
	2		93.4	94.0	95.5	94.9	93.8
	3		90.9	94.2	95.0	94.8	94.7
	4		95.3	95.3	94.8	92.2	95.2
	5		96.0	96.5	93.0	93.6	91.9
	6		93.9	96.6	93.1	91.8	92.7
	Total	94.2	93.9	95.6	94.6	93.7	93.5
Region	K		95.4	95.8	95.9	95.3	96.0
	1		94.9	95.3	95.2	94.9	95.4
	2		95.1	95.5	95.3	95.2	95.7
	3		95.2	95.4	95.6	95.3	95.7
	4		95.1	95.6	95.4	95.3	95.6
	5		95.3	95.6	95.5	95.3	95.6
	6		94.5	94.8	94.8	94.7	94.8
	Total	95.2	93.7	95.4	95.4	95.1	95.6
State DEC	K		94.3	94.7	94.7	94.3	95.0
	1		93.7	94.2	94.2	93.9	94.5
	2		94.0	94.4	94.2	94.2	94.7
	3		94.1	94.5	94.4	94.4	94.8
	4		94.0	94.5	94.3	94.3	94.7
	5		94.0	94.4	94.2	94.2	94.5
	6		93.6	94.0	93.8	93.8	94.1
	Total	94.1	92.1	94.4	94.3	94.2	94.7

Management of non-attendance

During 2012 the school conducted a review of the attendance procedures and developed protocols that promote better attendance and punctuality.

The benefits of this review are reflected in the improved attendance rates of our students whose attendance rates now exceed those of both the region and state.

Parents are required to explain the absences from school of their children promptly. Intervention is implemented when a student's attention is of concern. Intervention may include meeting with parents, establishing an attendance program and where necessary, referral to a DEC home school liaison officer. Exemptions and or/leave to return overseas for extended periods of time to attend religious festivals, marriage celebrations, holidays and visit family remain a continuous concern in maintaining a quality education program for these students.

Class sizes

This table shows class sizes as reported to the class size audit in March 213

Roll class	Year	Total in class	Total in year
KG	K	15	15
KK	K	16	16
1B	1	23	23
2/3B	2	20	28
4H	3	8	28
3C	3	27	27
5OH	5	24	24
6T	6	23	23

Staff information

It is a requirement that reporting of information for all staff must be consistent with privacy and personal information policies.

Staff establishment

The following table outlines the teaching staff appointed to Kirrawee Public School for 2013.

Position	Number
Principal	1.0
Assistant Principal (Special Education)	1.0
Assistant Principal(s)	3.0
General Assistant	0.3
Primary P/T RFF	.3
Student Support RFF	.336
Classroom Teachers	5.0
Teacher of Moderate Disabilities	2.0
Teacher of Mild Intellectual Disabilities	1.0
Primary School Counsellor	0.4
Support Teacher Learning Assistance	0.8
Teacher Librarian	0.6
Teacher of ESL	0.2
Primary Part-Time Teacher	0.4
School Administrative & Support Staff	2.022
Total	17.192

The principal is class-free and the assistant principals have fulltime classes. Where staff positions are shown in decimal form, 0.2 is equivalent to one day.

A school counsellor, while not appointed to the school, attends the school two days per week.

Workforce composition

The Australian Education Regulation, 2013 requires schools to report on Aboriginal composition of their workforce.

On the information available at the time of writing this report Kirrawee Public School does not currently have any members of staff who are identified as Aboriginal.

Teacher Qualification

The teaching staff meet the professional requirements for teaching in NSW public schools.

Qualifications	% of staff
Degree or Diploma	84
Postgraduate	16

Financial summary

This summary covers funds for operating costs and does not involve expenditure areas such as permanent salaries, building and major maintenance.

Date of financial summary	30/11/2013
Income	\$
Balance brought forward	100833.71
Global funds	180729.59
Tied funds	42800.54
School & community sources	144850.46
Interest	3352.57
Trust receipts	10999.85
Canteen	0.00
Total income	483566.72
Expenditure	
Teaching & learning	
Key learning areas	24775.96
Excursions	26765.80
Extracurricular	73098.08
Library	8088.48
Training & development	22168.56
Tied funds	45612.25
Casual relief teachers	55591.84
Administration & office	61818.21
School-operated canteen	0.00
Utilities	35812.44
Maintenance	29169.47
Trust accounts	10659.75
Capital programs	0.00
Total expenditure	393560.84
Balance carried forward	90005.88

A full copy of the school's 2013 financial statement is tabled at the annual general meetings of the School P & C.

School performance 2013

Achievements

Choir

JUNIOR CHOIR

The 2013 Junior Choir comprised 27 students from Years 2 and 3 and rehearsed each week for several events. These included Grandparents' Day, Education Day, and Kindergarten Orientation day.

The choir's performance at Sutherland Entertainment Centre for the annual Sutherland Shire Schools Music Festival in August was the highlight of many months' practice. They performed with our school dance group.

Band

During 2013 we were able to sustain both a Training Band and a Performing Band. The ongoing support for a band at KPS was to raise the education of instrumental music by offering affordable, inclusive tuition to students in Years 3 to 6.

All band members performed at an Education Week Concert and at the annual Presentation Day Assembly. Both bands performed at Band Fest and at an end-of-year concert. Semester 2 culminated with this end-of-year concert where all students were able to showcase their talent and love of music.

During 2013 we were able to sustain both a Training Band and a Performing Band. The Training Band performed at a Principal's Concert; the Performing Band performed at an Education Week Concert and at the annual Presentation Day Assembly. Both bands performed at BandFest and at an evening end-of-year concert. Semester 2 culminates with this end-of-year concert where all children are able to showcase their talent and love of music.

Perhaps the greatest testimony of achievement was at the Bandfest organised by Engadine Music was a significant event for both the Training and Performing Bands this year. Bandfest includes

both Primary and Secondary school bands and is an ideal forum for students to be challenged by the musicality demonstrated by more experienced bands. We were very excited to earn a Gold Award with the adjudication for both our bands indicating how well they had both progressed during Semester 1.

The band teacher, Mrs Joanne Holloway, continued to give expert tuition and encouragement to the students as she provided weekly lessons for the students. KPS also thank the services, support and guidance given to the students by the band coordinator Ms Kerrian Cartledge .

UKULELE Group

In 2013 the school introduced a trial ukulele program to encourage students to access a greater variety of string instruments. The program was fully subsidized by the school at a cost of \$50 per term per student.

Ten Students from stage 3, performed exceptionally well with a finale at the 2013 school Presentation Day. We look forward to renewed interest in 2014.

Dance

JUNIOR GIRLS DANCE

KPS Junior Dance 2013 had 30 members both boys and girls from Years 1 to Year 3. They enjoyed participating in the combined school rehearsals. They performed well at the annual Sutherland Shire Music Festival and were complemented by the organisers on their wonderful behaviour. Three other performance opportunities in 2013 were, the Education Week Open Day concert, a K-6 Assembly, and at the annual Band Concert Night.



SENIOR GIRLS DANCE

We have maintained a tradition of dance at Kirrawee School for many years. It began with the Senior Girls Dance Group taught by Ms Wendy McMahon of WAM dancers. Dance quickly became popular with the children of KPS and so a Junior Girls Dance Group and a Boys Dance Group was created. In 2013 the Seniors and the Juniors, including a small group of enthusiastic boys, have had many opportunities to dance in front of a live audience. The Senior Dance Group is made up of a group of girls from Years 3 to 6 who meet every Tuesday morning to develop their dance skills. These students have been taught contemporary, modern, jazz and lyrical routines. They have danced at the Sutherland Shire Entertainment Centre for the Sutherland Shire Schools Music Festival and Youth on Parade and many times at Kirrawee Public School for family, friends, grandparents and new kindergarten students and parents on their orientation visits. It is always a pleasure to take this dance group out to represent KPS because of their exemplary behaviour and also their developing dance skills. The dance program continues to be an important part of Kirrawee Public School educational culture.

NURSING HOME VISITS 2013

As part of Kirrawee Public Schools community service the children from K-2 and the Senior Choir visit several local nursing homes in the week before Easter. The children learn a repertoire of Easter songs and present these to the residents of the nursing homes. They also take Easter cards, that have been coloured in by the primary students, and an Easter egg to give to the residents after singing to them. The residents of The Palms Nursing Home, Big Sister Hostel and Thomas Holt Village enjoyed these visits immensely as do the children of Kirrawee Public School.

Public Speaking

Kirrawee Public School participated in the 2013 Zone Public Speaking Competition. At a local school level students develop through the school values confidence and excellence in public speaking. Through integrated programming students across the stages including the support unit are encouraged to engage public speaking. Three students – Luke Davey from Stage 1, Maya Simmons from Stage 2 and Celeste Walker from Stage 3 represented Kirrawee against students from other schools in the Northern Zone competition.

Sport Achievements

PREMIER'S SPORTING CHALLENGE

In 2013 all students within the school were involved in the Premier's Sporting Challenge. The program aims to increase student's physical activity throughout the day. The students performed very well, with many students receiving a gold or platinum certificate for their effort. The school received a gold certificate overall for our performance in the challenge.

As part of the Premier's Sporting Challenge, 31 students from Kirrawee Public School attended the Socceroos World Cup Qualifier match against Iraq at ANZ stadium. Prior to the game the students were involved in a March Past on the field with over 3000 students from 75 school across NSW. The children were so thrilled to be going onto the field. We walked a half lap of the field cheering for Australia and waving to all the fans. This aimed to promote team sports to the students and what can be achieved with hard work.



PRIMARY SCHOOL SPORT ASSOCIATION (PSSA)

Sport/ PSSA

The PSSA season was enjoyed by all those who participated with the Junior Boys Soccer Team being awarded Joint Premiers in the Winter season. The Senior A Netball team and the Junior Girls Tee-ball team were both Runners- Up in their competitions. We would like to congratulate the children on their wonderful performance and sportsmanship.

We would also like to congratulate Jai Elliott on his outstanding Zone and Sydney-East Regional selection. He qualified for *many* Zone and Region teams and was selected in the State Softball team. Well done Jai!

KPS engaged various sporting providers throughout 2013. In Term 1 we worked with Flexi-Kids for a Gymnastics Program. In Term 2 we saw the return of Futsal for a Soccer skills program, and in Term 3 we welcomed a new provider Got Game who provided Tee-ball/Softball clinics for the students. All students thoroughly enjoyed participating in the programs and a vast improvement in skills was noticed.

Students from KPS represented the school in a wide variety of sports this year.

Jai Elliott gained placement in the Zone AFL, cricket, rugby, rugby league, water polo and touch football teams. He also was successful in gaining entry into the NSW state softball team which won the National titles in Blacktown in term 4.

Noah Rees gained placement in the Zone rugby league, softball and touch football teams. He was also successful in gaining entry into the Sydney East Region water polo team which competed against other regional teams in a gala day at Sutherland in term 4.

Tyler Field gained placement in the Zone softball team.

Soakimi Folaumoeloa and Cayllum McAlister gained placement in the Zone rugby league team.

Shawnae Macris gained placement in the Zone netball team.

CARNIVALS: SWIMMING, CROSS COUNTRY & ATHLETICIS CARNIVAL

Athletics Carnival

The School Athletics carnival was this year held in Term 3 at The Ridge Athletics Track, a wonderful venue. Attendance and behaviour were outstanding. Claire Stegbauer and Taj Hadenham both broke the existing records in their respective 100 metre events.

Thirty-five students represented the school at the Sutherland Zone carnival in September.

The following students represented Sutherland Zone at the Sydney East Athletics Carnival at Homebush in September:

Junior girls' relay team, consisting of Jade Stegbauer, Aman Kuai, Aishlin Walker and Celeste Walker.

A side highlight but very motivating and exciting for the students, was the school Principal Mr Williams competing against some senior students in a 100m dash. He finished with a silver medal and our school captain Nicola Johnson gained the gold. Go Mr Williams !

Claire Stegbauer – 100 m

Jade Stegbauer – 100 m, Jnr Girls Long Jump

Jai Elliott - Senior Boys' High Jump

Swimming Carnival

The Swimming Carnival was held in Term 1 at Caringbah Leisure Centre earlier this year and was a great success. We had a number of students who qualified for the Sutherland Zone Carnival where the children proudly represented their school. A huge thanks to all the parents who assisted on the day. Last, but not least we had great weather in 2013.

Cross Country

The School Cross Country carnival took place at GyMEA Technology High School in Term 2. We would like to officially thank GTHS for their partnership and organisation of the carnival, including the complimentary sausage sizzle for all participants. Once again we had a number of students qualify and represent KPS at the Zone Cross Country carnival which was held at Miranda Park.

Academic

In the National Assessment Program, the results across the Years 3, 5, 7 and 9 literacy and numeracy assessments are reported on a scale from Band 1 to Band 10.

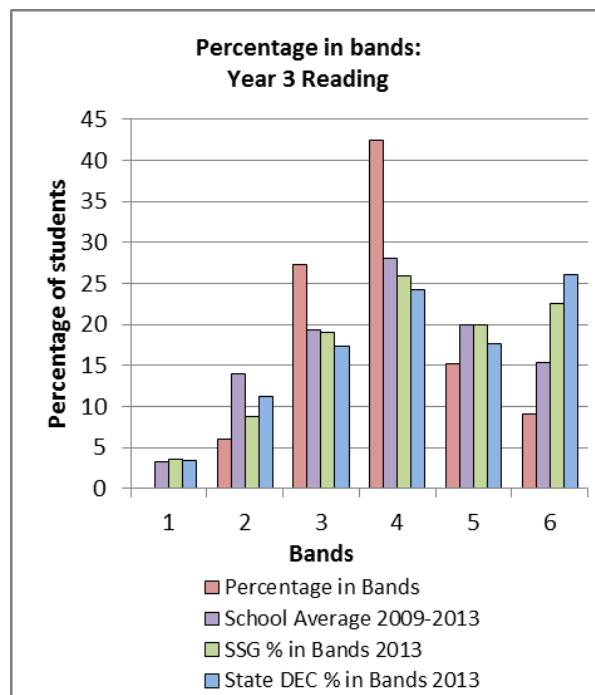
The achievement scale represents increasing levels of skills and understandings demonstrated in these assessments.

Yr 3: from Band 1 (lowest) to Band 6 (highest for Year 3)

Yr 5: from Band 3 (lowest) to Band 8 (highest for Year 5)

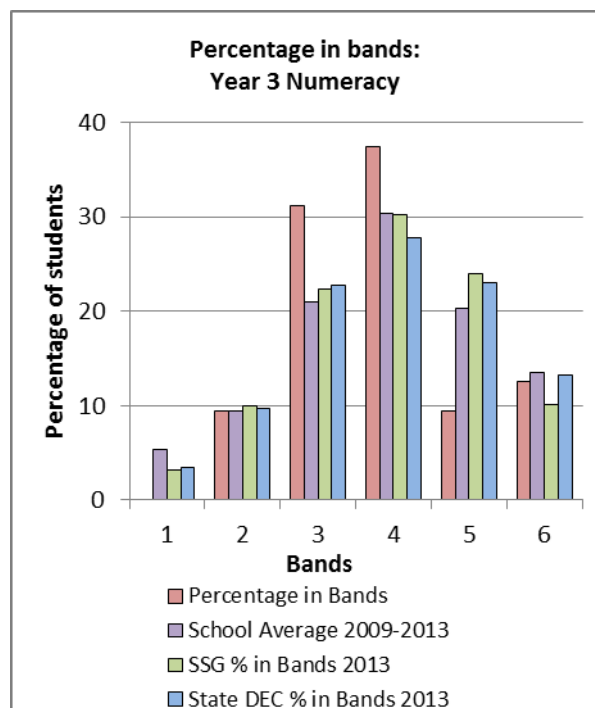


Literacy – NAPLAN Year 3



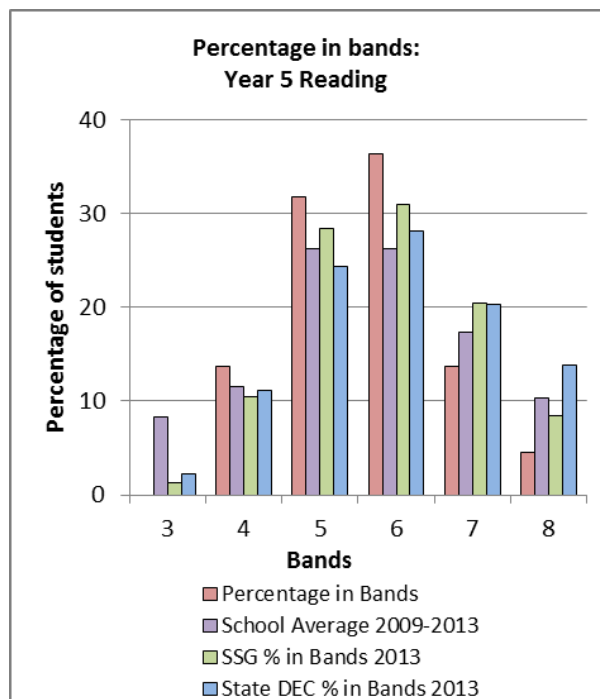
Data indicates that 86% of students are achieving above the national minimum standard in literacy

Numeracy – NAPLAN Year 3



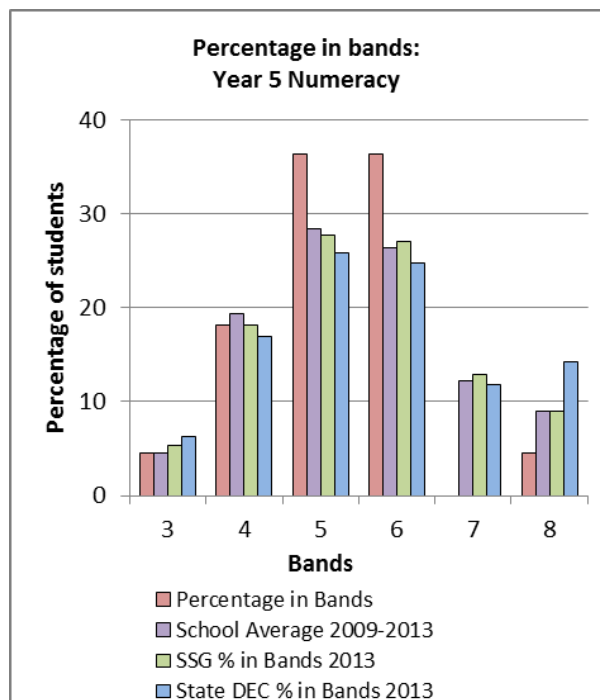
NAPLAN data indicate that 100% of students are achieving above the minimum national standard in numeracy. (exempt students excluded)

Literacy – NAPLAN Year 5



NAPLAN data indicate that 100% of students are achieving proficiency above the minimum national standard in reading. The percentage in the lower bands has decreased significantly as more students move into bands 5 and 6.(exempt students excluded)

Numeracy – NAPLAN Year 5



NAPLAN data indicate that 95.5% of students are achieving above the national standard in numeracy. (exempt student excluded)

Progress in spelling

Average progress in Spelling between Year 3 and 5*				
	2008-2010	2009-2011	2010-2012	2011-2013
School	81.6	44.8	119.9	89.8
SSG	82.0	72.2	99.8	87.7
State DEC	84.5	75.4	95.4	84.9

Average progress in Grammar & Punctuation between Year 3 and 5*				
	2008-2010	2009-2011	2010-2012	2011-2013
School	73.0	31.6	72.0	81.5
SSG	95.9	77.8	85.7	84.0
State DEC	96.6	82.7	81.3	79.4

The My School website provides detailed information and data for national literacy and numeracy testing (NAPLAN).

Click on the link <http://www.myschool.edu.au> and enter the school name in the *Find a school* and select *GO*.



Significant programs and initiatives

ICT – Information and Communication Technologies

Kirrawee Public School has focused on building capacity in its staff in the area of ICT (Information and Communication and Technologies) throughout 2013. The focus has been on integration of technology into all curriculum areas. We have supported this by providing staff with training and team teaching opportunities to better their knowledge, understanding and skills. Kirrawee Public School has also continued to improve its ICT infrastructure throughout 2013. The school boasts a data projector in every classroom, a bank of at least 4 computers and an up to date computer lab which houses 27 computers, allowing every opportunity for students to experience an integrated ICT curriculum.

The school has begun to expand its interactive technologies. Four classrooms now have interactive technologies installed and being used effectively. We also have plans to install interactive technologies into every classroom by earlier 2014. The school is continuing to plan for the future with plans to install more wireless network connections and continual upgrading of our computers. With the ever changing nature of technology and the role that it plays in society we at Kirrawee Public School foresees that technology will continue to be a key feature in all areas of the school.

Support for Student Learning

A Learning and Support Teacher (L.A.S.T.) was appointed to Kirrawee P.S. Learning and Support teachers have a role within whole school initiatives to improve outcomes for students with additional learning and support needs. This includes support for students with significant learning difficulties, mild intellectual disabilities, language disorders and behaviour needs.

Aboriginal education

Throughout 2013 we aimed to implement high quality and culturally inclusive programs. As part of a study of local Aboriginal history and culture, students in Stages 1 and 2 attended an in-school presentation by a Dharawal Elder. An acknowledgement of the traditional custodians and singing a verse of the National Anthem in the Dharawal language remain important features of our weekly K-6 assemblies.

To encourage and promote Aboriginal student achievement, students from each stage were given the opportunity to participate in the following initiatives: (i) Koori Art Expressions; Shelby Charles was awarded the Koori Expressions award for 2013

English Committee

The English committee for 2013 comprised Karen Beckman, Maria Kirkis, Connie Mellios, Debbie Christie and Ruth Hewitt. The committee has worked hard this year, and in partnership with the librarian ensured that the school was fully resourced for the implementation of the Australian English syllabus in 2014.

Environment

Our school has had a tremendously successful year of environmental education. The environmental group has grown and students across k-6 have been involved caring for plants and enhancing the school grounds. Tasks included watering (from the school water tank), weeding, raking leaves and to form into mulch. This year KPS has been successful in attaining \$100 from Southern Sydney Environmental Education Network. All funds were used to purchase gardening equipment. The students created a small garden at the front office where they planted five native plants donated by the local council.

Library

Our school library continued to support educational opportunities throughout 2013.

This year the role of the teacher librarian has been really busy, particularly the last semester of 2013 as we gear up to implement the new English Syllabus for the Australian Curriculum next year.

In terms of resourcing the new English Syllabus, we have undertaken a collection mapping exercise to determine how our current collection of books and other resources meets the needs of the new curriculum. We have closely examined many recommended booklists and identified areas of need. The library budget was increased for this purpose and many of the suggested books and resources that we didn't have were purchased and are now ready for use. There is a focus on Asia, sustainability and indigenous perspectives in the new curriculum. Our library is well stocked and will provide a diversity of resource formats on these key areas for both students & teachers alike.

Back in May, all students K-4 participated in National Simultaneous Story time reading *"The Wrong Book"* by Nick Bland. This was supported with interactive activities.

Our Book Week celebrations in August included dressing up as characters from a favorite book and hosting a Scholastic Book Fair. Book Week is the longest running children's festival in Australia, celebrating its 68th birthday in 2013. The theme for this year was *"Read Across the Universe"*.

Student participation in the *Premier's Reading Challenge* is encouraged each year across all grades. A total of 82 students completed the Premier's Reading Challenge this year. Of that 82, 16 students were awarded Gold certificates. Gold certificates are awarded when students complete the Challenge for 4 years. Of particular note, Nicola Johnson in 6T has received the first ever Platinum award for our school. Nicola was presented with a Platinum award for having

completed the Premier's Reading Challenge for 7 years (from K to Year 6).

Enrichment Program

The 2013 Enrichment program involved identifying students from stage 2 and 3 that had potential in a specific subject. Students took part in small groups where they were able to enhance their skills and reach their potential. The focuses of the enrichment groups this year were debating, mathematics, technology and drama. Each group had a goal of producing a functional product to show the results of the enrichment group.

The art products included a combined artwork focussing on faces, themes and a use of colour. The mathematics product was a functional small business that sold a variety of small products (cards, photo frames). Two technology groups created a video with one focussing on healthy lifestyle and the other focussing on how to use the fitness equipment and Kirrawee Public School. The debating group put on a debate for their peers and finally the two drama groups created separate productions with one based on a readers theatre script of the Three Little Pigs and the other based around a script written by Mr. Stevenson called Belling the Cat.



Technology

Kirrawee Public School has focused on building capacity in its staff in the area of ICT (Information and Communication and Technologies) throughout 2013. The focus has been on integration of technology into all curriculum areas. We have supported this by providing staff with training and team teaching opportunities to better their knowledge, understanding and skills. Kirrawee Public School has also continued to improve its ICT infrastructure throughout 2013. The school boasts a data projector in every classroom, a bank of at least 4 computers and an up to date computer lab which houses 27 computers, allowing every opportunity for students to experience an integrated ICT curriculum. The school has begun to expand its interactive technologies. Four classrooms now have interactive technologies installed and being used effectively. We also have plans to install interactive technologies into every classroom by earlier 2014. The school is continuing to plan for the future with plans to install more wireless network connections and continual upgrading of our computers. With the ever changing nature of technology and the role that it plays in society we at Kirrawee Public School foresees that technology will continue to be a key feature in all areas of the school.

Multicultural Education

One of our school's important goals is to help students acquire the knowledge, attitudes and skills needed to function effectively in a multicultural society. On Harmony Day the school was decorated on orange streamers and the school community encouraged to wear orange as a dress colour.

At Kirrawee we have English as a second Language Program 2 days per week and since term three we have also run the New Arrivals Program each week. The school has 14 different cultural groups across the student population. The children have had many experiences to help develop their language skills.

Support Unit

The Support Unit consists of 33 students enrolled in special x classes.

1 class for students with Mild Intellectual delay (IM), 2 classes for students with Moderate Intellectual Delay (IO)

The students are educated through Individual Learning Plans. These plans are prepared in collaboration with parents to identify individual learning needs of each student.

All students learn through teacher directed engagement of technology, computers and high level technology eg I pads. Students in the Support Unit enjoy integration with mainstream students in many school activities

Each semester the Learning Support Team reviews individual student needs and educational plans in consultation with parents.

This process has delivered a quality partnership between home and school.

Student Representative Council

The SRC is a democratically elected group made up of members of each class in our school from Year1 to Year 6 The children voted in for this year have been good representatives for their class and our school. The leadership opportunities afforded the children will stand them in good

stead as they progress through life. 2013 has been a quieter year for SRC activity, though many projects and ideas have been discussed. This term, the SRC voted to support the disaster relief effort as a result of the devastating typhoon in the Philippines. A colourful mufti and gold coin day was held. Even though we are a small school, a significant amount of money was donated to the Red Cross.

Progress on 2013 targets

Target 1

Whole school approach to improve Aboriginal Education

Our achievements include:

- 100% significant increase in the awareness and expansion of aboriginal education and staff professional learning
- 100% significant engagement across the school through event participation to celebrate Naidoc Week
- 90% of students participated in targeted programs to enhance their appreciation of aboriginal culture and art

Target 2

Improve technology based teaching and learning within class programs

Our achievements include:

- 80% continuation of highly successful and valued Information Skills Program for all students k-6
- the installation of interactive whiteboards and/or interactive projectors across the whole school
- expansion of Integrated technology teaching into classroom lessons

School evaluation

NSW public schools conduct evaluation to support the effective implementation of the school plan and also management practices

Education and Management Practices

Planning and Culture

Background

At the end of 2012 and 2013 Kirrawee Public School conducted satisfaction surveys with parents and teachers

This open survey that asks participants to tell us things about the school, they would like us to

keep and things they would like us to improve or change.

Findings and conclusions

One of the collective comments concerned communication. Both staff and families agreed that communication relating to aspects of school life needs improving.

- (a) Communication between the school and families
- (b) Communication with the community promoting the school

Future directions

Communication will become a focus using technology for 2014 to support this process.

Curriculum

Reading

Background

In 2012 and 2013 data was gathered from class assessments and planning analyses. Teachers focused on support programs where required, peer group teaching and differentiation on instruction.

Continued analyses of NAPLAN confirmed that we need to reinforce the development of quality teaching of reading.

Findings and conclusions

Data analysis finds that the majority of our students are performing in the top 3 bands in reading in NAPLAN in Year 3. These gains are also maintained for the majority of Year 5 students who achieve in the top 3 bands in NAPLAN.

Future directions

Whilst this seem satisfactory, teachers concluded we must examine our quality pedagogy for all stages to further enhance learning outcomes.

Professional learning

School based professional development sessions were held regularly during each term on targeted sessions aligned with the school's improvement plan and in accordance with DEC's compliance schedule.

This year we clustered with fifteen other schools to engage in high level professional learning to gain first class knowledge on the National Curriculum and its implementation for 2014.

A total of \$22168.56 was allocated for wages, course fees and casual relief. Funding available was sufficient to enable all requests for attendance at courses, along with school priorities and training associated with instructional leaders to deliver teacher education at KPS.

Yearly compliance training was conducted throughout 2013 in CPR, Child Protection and Code of Conduct.

In addition to these teachers attended numerous team development meetings during the year covering all aspects of learning.

These opportunities included:

- Teachers further developing their own ICT skills through peer mentoring, online research and sharing module knowledge with their colleagues
- Teachers had the opportunity to work in teams, liaised with other schools, cooperatively planning and programming to enhance student learning outcomes.

School planning 2012—2014

The school planning policy provides direction for the preparation and implementation of school plans including the identification of priority areas, intended outcomes and targets that are consistent with the NSW State Plan and the Department's planning documents.

School priority 1

Literacy and Numeracy

Outcome for 2012–2014

Quality teaching and learning programs in literacy and numeracy resulting in overall increases in literacy and numeracy achievement in line with state and regional targets.

2014 Targets to achieve this outcome include:

- Continue to increase the percentage of Year 3 and year 5 students in the top three bands in reading and writing
- Focus on k-2 reading and support programs .
- Increase the percentage of K-6 students who achieve stage outcomes in talking and listening by 10% each year.

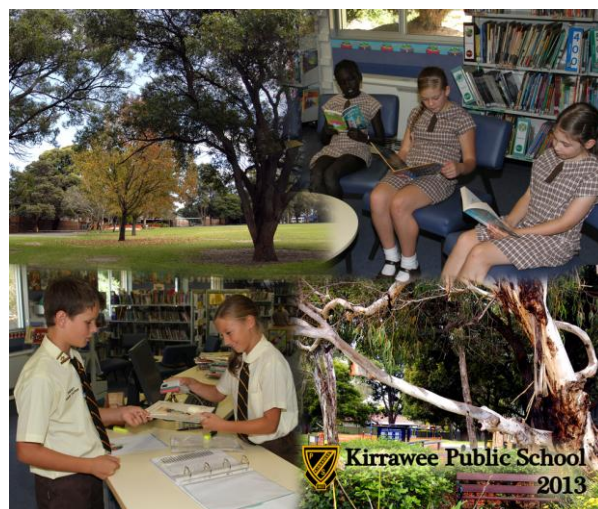
Strategies to achieve these targets include:

- teachers will track student achievement along the literacy continuum
- plan and prepare for the implementation of the new NSW English syllabus
- professional learning for all teachers on running records and consistent teacher judgement/s

School priority 2

Outcome for 2012–2014

- Continue to increase achievement levels in numeracy for all students.
- Continue to train teachers in the skill of teaching of numeracy



2014 Targets to achieve this outcome include:

- to increase the percentage of Year 3 students in the top three bands in numeracy (NAPLAN) by 10%
- to increase the percentage of students of Year 5 in the top three bands in numeracy (NAPLAN) by 10% in 2014
- to increase the percentage of students who achieve stage expected outcomes by 10% each year.

Strategies to achieve these targets include:

- teachers will track student achievement along the numeracy continuum
- involve students achieving above stage expected outcomes in enrichment and extension programs and
- plan and prepare in Semester 2 for the implementation of the new NSW mathematics syllabus.

School Code: 4075

Parents can find out more information about Annual School Reports, how to interpret information in the reports and have the opportunity to provide feedback about these reports at:

<http://www.schools.nsw.edu.au/asr>



About this report

In preparing this report, the self-evaluation committee has gathered information from evaluations conducted during the year and analysed other information about the school's practices and student learning outcomes. The self-evaluation committee and school planning committee have determined targets for the school's future development.

Mr Selwyn Williams	Principal
Mrs Melissa Oostdam	Assistant Principal
Mr Matthew Bursill	Assistant Principal
Mrs Robyn Stephens	Assistant Principal (Spec)
Mrs Sharon Field	P & C President
Mrs Colleen Chiswick	School Admin. Manager

School contact information

Kirrawee Public School

146-156 Bath Road, Kirrawee 2232

Ph: 9521 4514

Fax: 9545 3318

Email: kirrawee-p.school@det.nsw.edu.au

Web: www.kirrawee-p.schools.nsw.edu.au